

Fluke 15B+/17B+ Digital Multimeters

Fluke quality is always within your reach

Technical Data

The Fluke 15B+ and 17B+ digital multimeters are compact, easy to use tools that deliver safe, reliable measurements.

The right tools for the job

Your job requires that you have a rugged, reliable and accurate digital multimeter. The new Fluke 15B+ and 17B+ offer everything you need.

Product highlights

- **NEW** – CAT III 600 V safety rating
- **NEW** – 50 % bigger display with bright white backlight
- **NEW** – Over-voltage indicator (17B+)
- Frequency and temperature measurement (17B+)
- Voltage, resistance, continuity, capacitance
- Input terminal for ac and dc current measurements to 10 A current
- Diode test, data hold



Specifications

Accuracy is specified for 1 year after calibration, at operating temperatures of 18 °C to 28 °C, relative humidity at 0 % to 75 %. Accuracy specifications take the form of: \pm [(% of Reading) + (Number of Least Significant Digits)].

Function	Range	Resolution	Accuracy	
			15B+	17B+
AC volts (40 Hz to 500 Hz) ¹	4.000 V 40.00 V 400.0 V 1000 V	0.001 V 0.01 V 0.1 V 1 V	1.0 % + 3	1.0 % + 3
DC volts	4.000 V 40.00 V 400.0 V 1000 V	0.001 V 0.01 V 0.1 V 1 V	0.5 % + 3	0.5 % + 3
AC millivolts	400.0 mV	0.1 mV	3.0 % + 3	3.0 % + 3
DC millivolts	400.0 mV	0.1 mV	1.0 % + 10	1.0 % + 10
Diode test ²	2.000 V	0.001 V	10 %	10 %
Resistance (Ohms)	400.0 Ω	0.1 Ω	0.5 % + 3	0.5 % + 3
	4.000 k Ω	0.001 k Ω	0.5 % + 2	0.5 % + 2
	40.00 k Ω	0.01 k Ω	0.5 % + 2	0.5 % + 2
	400.0 k Ω	0.1 k Ω	0.5 % + 2	0.5 % + 2
	4.000 M Ω	0.001 M Ω	0.5 % + 2	0.5 % + 2
	40.00 M Ω	0.01 M Ω	1.5 % + 3	1.5 % + 3

Function	Range	Resolution	Accuracy	
			15B+	17B+
Capacitance ³	40.00 nF 400.0 nF 4.000 µF 40.00 µF 400.0 µF 1000 µF	0.01 nF 0.1 nF 0.001 µF 0.01 µF 0.1 µF 1 µF	2 % + 5 2 % + 5 5 % + 5 5 % + 5 5 % + 5 5 % + 5	2 % + 5 2 % + 5 5 % + 5 5 % + 5 5 % + 5 5 % + 5
Frequency ¹ Hz (10 Hz to 100 kHz)	50.00 Hz 500.0 Hz 5.000 kHz 50.00 kHz 100.0 kHz	0.01 Hz 0.1 Hz 0.001 kHz 0.01 kHz 0.1 kHz	NA	0.1 % + 3
Duty cycle ¹	1 % to 99 %	0.1 %	NA	1 % typical ⁴
AC current µA (40 Hz to 400 Hz)	400.0 µA 4000 µA	0.1 µA 1 µA	1.5 % + 3	1.5 % + 3
AC current mA (40 Hz to 400 Hz)	40.00 mA 400.0 mA	0.01 mA 0.1 mA	1.5 % + 3	1.5 % + 3
AC current A (40 Hz to 400 Hz)	4.000 A 10.00 A	0.001 A 0.01 A	1.5 % + 3	1.5 % + 3
DC current µA	400.0 µA 4000 µA	0.1 µA 1 µA	1.5 % + 3	1.5 % + 3
DC current mA	40.00 mA 400.0 mA	0.01 mA 0.1 mA	1.5 % + 3	1.5 % + 3
DC current A	4.000 A 10.00 A	0.001 A 0.01 A	1.5 % + 3	1.5 % + 3
Temperature	50 °C to 400 °C 0 °C to 50 °C -55 °C to 0 °C	0.1 °C	NA	2 % ± 1 °C ± 2 °C 9 % ± 2 °C
Backlight	—	—	Yes	Yes

¹All ac, Hz, and duty cycle are specified from 1 % to 100 % of range. Inputs below 1 % of range are not specified.

²Typically, open circuit test voltage is 2.0 V and short circuit current is <0.6 mA.

³Specifications do not include errors due to test lead capacitance and capacitance floor (may be up to 1.5 nF in the 40 nF range).

⁴Typical means when the frequency is at 50 Hz or 60 Hz and the duty cycle is between 10 % and 90 %.

Function	Overload Protection	Input Impedance (Nominal)	Common Mode Rejection Ratio	Normal Mode Rejection Ratio
AC volts	1000 V ¹	>10 MΩ, <100 pF	>60 dB at dc, 50 Hz or 60 Hz	—
AC millivolts	400 mV	>1 MΩ, <100 pF	>80 dB at 50 Hz or 60 Hz	—
DC volts	1000 V ¹	>10 MΩ, <100 pF	>100 dB at dc, 50 Hz or 60 Hz	>60 dB at 50 Hz or 60 Hz
DC millivolts	400 mV	>1 MΩ, <100 pF	>80 dB at 50 Hz or 60 Hz	—

¹10⁶ V Hz max.

General specifications

Maximum voltage between any terminal and earth ground	1000 V
Display (LCD)	4000 counts, updates 3/sec
Battery type	2 AA, NEDA 15 A, IEC LR6
Battery life	500 hours minimum (50 hours in LED Test mode without load. The hours with load depends on the type of LED under test.)
Temperature	Operating: 0 °C to 40 °C; Storage: -30 °C to 60 °C
Relative humidity	Operating humidity: ≤ 90 % RH at 10 °C to 30 °C; ≤ 75 % RH at 30 °C to 40 °C; non-condensing (<10 °C)
Operating humidity, 40 MΩ range	≤ 80 % RH at 10 °C to 30 °C; ≤ 70 % RH at 30 °C to 40 °C
Altitude	Operating: 2000 m; Storage: 12,000 m
Temperature coefficient	0.1 X (specified accuracy) /°C (<18 °C or >28 °C)
Fuse protection for current inputs	440 mA, 1000 V fast fuse, Fluke specified part only. 11 A, 1000 V fast fuse, Fluke specified part only
Size (HxWxL)	183 mm x 91 mm x 49.5 mm
Weight	455 g
IP rating	IP40
Safety	IEC 61010-1, IEC61010-2-030 CAT III 600 V, CAT II 1000 V, Pollution Degree 2
Electromagnetic environment	IEC 61326-1: Portable
Electromagnetic compatibility	Applies to use in Korea only

Class A Equipment (Industrial Broadcasting & Communication Equipment)¹

¹This product meets requirements for industrial (Class A) electromagnetic wave equipment and seller or user should take notice of it. This equipment is intended for use in business environments and is not to be used in homes.

Ordering information

FLUKE-15B+ Digital Multimeter

FLUKE-17B+ Digital Multimeter

Included

Test leads with caps, thermocouple temperature probe (17B+), 2 AA batteries, users manual.

Optional accessories

TPAK Meter Hanging Kit

TL175 TwistGuard™ Test Leads



Fluke. *Keeping your world up and running.®*

Fluke Corporation

PO Box 9090, Everett, WA 98206 U.S.A.

Fluke Europe B.V.

PO Box 1186, 5602 BD
Eindhoven, The Netherlands

For more information call:

In the U.S.A. (800) 443-5853 or
Fax (425) 446-5116
In Europe/M-East/Africa +31 (0) 40 2675 200 or
Fax +31 (0) 40 2675 222
In Canada (800)-36-FLUKE or
Fax (905) 890-6866
From other countries +1 (425) 446-5500 or
Fax +1 (425) 446-5116
Web access: <http://www.fluke.com>

©2014 Fluke Corporation.
Specifications subject to change without notice.
Printed in U.S.A. 4/2014 6002719A_EN

Modification of this document is not permitted without written permission from Fluke Corporation.

Fluke 59

Mini Infrared Thermometer

Reliable temperature measurements.
Wherever you need to go

The Fluke 59 Mini digital thermometer is the perfect product for electricians to do daily electrical installation and maintenance jobs. The Fluke 59 Mini Infrared Thermometer offers quick and reliable surface temperature readings. This compact and portable design enables technicians to easily carry, hold and operate the meter under industrial environment.



Technical Data

Product highlights

- Easy-to-use for everyday temperature measurements
- Single point laser sighting for accurate and repeatable measurements
- Large, easy-to-read backlit LCD display for easy viewing
- Small and lightweight design fits easily into your tool box
- One year warranty

Specifications

Measurement Range	– 18°C to 275°C (0°F to 525°F)
Accuracy	100°C - 275°C (212°F to 515°F): ±2% of reading 0°C - 100°C (32°F to 212°F): ±2°C(3.5°F) of reading Below 0°F (32°F): ±3°C(5.5°F) of reading
Repeatability	±1% of reading or ±1°C whichever is greater
Emissivity	Pre-set 0.95
Distance-to-Spot size	8:1 calculated @ 90% energy
Response time	< 500ms
Display resolution	0.2°C (0.5°F)
Spectral range	6.5 – 18 um Thermopile detector
Display hold 7 seconds	Yes
LCD backlight	Yes
Temperature display	°C or °F selectable
Low battery indicator	Yes
Ambient operating range	0°C - 50°C (32°F to 120°F)
Relative humidity	10% - 90% RH non-condensing @ up to 30°C(86°F)
Storage temperature	-20°C - 65°C(-4°F to 150°F) without battery
Power	9V battery included
Battery life	4 hours
Weight	200g, with battery
Dimensions (H x L x W)	152mm x 102mm x 38mm
Standards	Conforms to EN 61326-1 Electromagnetic Emissions and Susceptibility EN 61010-1 General Safety EN 60825-1 Laser Safety
Certification	CE, CMC
Warranty	1 year

Fluke .The Most Trusted Tools In The World.



Authorised Retailer



SGM Lab Solutions

Regd. Office: BA-15, Mangolpuri Industrial Area Phase-II Delhi-110034 +91-11-48481414, +91-8130897474

Branch Office: No.26, "Shri" Complex, 2nd Floor, Bendre Nagar, Above "SBM" ATM, Subramanya Pura Main Road, Kadirenahalli, Bangalore-560070 +91-80-42287106, +91-9902011444

Fax: +91-11-4385 2040

Email: info@lab360.co.in

TECHNICAL DATA

64 MAX, 62 MAX+ and 62 MAX IR Thermometers


TEMPERATURE RANGE
64 MAX

-30 °C to 600 °C (-22 °F to 1112 °F)

62 MAX+

-30 °C to 650 °C (-22 °F to 1202 °F)

62 MAX

-30 °C to 500 °C (-22 °F to 932 °F)

TEMPERATURE ACCURACY
64 MAX

± 1.0 °C or ± 1.0 % of reading,
whichever is greater

± 2.0 °C at -10 °C to 0 °C

± 3.0 °C at -30 °C to -10 °C

62 MAX+

± 1.0 °C or ± 1.0 % of reading,
whichever is greater

± 2.0 °C at -10 °C to 0 °C

± 3.0 °C at -30 °C to -10 °C

62 MAX

± 1.5 °C or ± 1.5 % of reading,
whichever is greater

± 2.0 °C at -10 °C to 0 °C

± 3.0 °C at -30 °C to -10 °C

DISTANCE:SPOT
64 MAX

20:1

62 MAX+

12:1

62 MAX

10:1

INTERNAL MEMORY
64 MAX

99 data point logging


AUTO CAPTURE


Takes the heat, the dust and water and a 3 meter drop. And now, internal memory and unattended monitoring.

The Fluke 64 MAX, 62 MAX+ and 62 MAX IR Thermometers have the precision you need to do your job accurately and will not break the budget. Designed and tested to survive a 3 meter drop, you can count on these lightweight, compact infrared thermometers to work when you need them to work—even in the harshest environments and when you're not able to be there (64 MAX).

- Precise laser technology for more accurate and repeatable measurements
- Temperature accuracy of up to ≥ 0 °C: ± 1 °C or ± 1 % of reading whichever is greater with 20:1 distance to spot ratio (64 MAX)
- Flashlight (64 MAX) and large, easy-to-read backlit LCD display for easy viewing even in dark environment
- IP54 rated for extra protection against airborne contaminants
- Get your tool to work when you can't—set time and desired interval between measurements and Auto Capture will capture spot temperatures unattended (64 MAX)
- 99 data point logging (64 MAX)
- Displays the minimum, maximum or average temperature, or the difference between two measurements
- Hi and Lo alarms for rapid display of measurements outside set limits
- The 62 MAX+ has dual rotating lasers to help you identify area to be measured. The measurement area is the spot between the dots (62 MAX and 64 MAX have 1).
- Small and lightweight, fits easily into your tool box

Specifications

	64 MAX	62 MAX+	62 MAX
Key features			
Temperature range	- 30 °C to 600 °C (-22 °F to 1112 °F)	- 30 °C to 650 °C (-22 °F to 1202 °F)	- 30 °C to 500 °C (-22 °F to 932 °F)
Accuracy (Calibration geometry with ambient temperature 23 °C +/- 2 °C)	± 1.0 °C or ± 1.0 % of reading, whichever is greater ± 2.0 °C at -10 °C to 0 °C ± 3.0 °C at -30 °C to -10 °C		± 1.5 °C or ± 1.5 % of reading, whichever is greater ± 2.0 °C at -10 °C to 0 °C ± 3.0 °C at -30 °C to -10 °C
Optical resolution	20:1 (calculated at 90 % energy)	12:1 (calculated at 90 % energy)	10:1 (calculated at 90 % energy)
Response time (95 %)	< 500 ms (95 % of reading)	< 300 ms (95 % of reading)	< 500 ms (95 % of reading)
Spectral response	8 to 14 microns		
Emissivity	0.10 to 1.00		
Display resolution	0.1 °C (0.2 °F)		
Repeatability (% of reading)	± 0.5 % of reading or ± 0.5 °C (whichever is greater)		± 0.8 % of reading or ± 1 °C (whichever is greater)
Auto Capture	Set time and interval to capture up to 99 measurements	-	
Internal memory	99 data point logging capability	-	
Flashlight	Yes	-	
Power	1 AA alkaline battery		
Battery life	30 hours with laser and backlight on	8 hours with laser and backlight on	10 hours with laser and backlight on
Weight	255 g (8.99 oz)		
Size	(175 x 85 x 75) mm (6.88 x 3.34 x 2.95) inches		
Operating temperature	0 °C to 50 °C (32 °F to 122°F)		
Storage temperature	-20 °C to 60 °C (-4 °F to 140 °F) (without battery)		
Operating humidity	Non- condensing @ ≤ 10 °C (50 °F) ≤ 90 % RH @ 10 °C (50 °F) to 30 °C (86 °F) ≤ 75 % RH @ 30 °C (86 °F) to 40 °C (104 °F) ≤ 45 % RH @ 40 °C (104 °F) to 50 °C (122 °F)		
Operating altitude	2000 meters above mean sea level		
Storage altitude	12,000 meters above mean sea level		
Drop test	3 meters		
Implement standard	Q/ASF01		
Standards and agency approval			
Compliance	IEC 61010-1: Pollution Degree 2		
Laser safety	IEC 60825-1 Class 2, 650 nm, < 1 mW		
Ingress protection rating	IP 54 per IEC 60529		
Warranty	3 years		

Ordering information

Fluke-64 MAX IR Thermometer
Fluke-62 MAX+ IR Thermometer
Fluke-62 MAX IR Thermometer

Included with product

IR Thermometer
 Printed instruction sheet
 Carabiner (62 MAX+ only)
 Product manuals available for download from fluke.com

Kits

Fluke T5-600/62 MAX+/1AC II
 IR Thermometer, Electrical Tester
 and Voltage Detector Kit
Fluke 62 MAX+/323/1AC
 IR Thermometer, Clamp Meter and
 Voltage Detector Kit

FLUKE®

Fluke 101 Digital Multimeter

The FIRST-CHOICE multimeter
for electrical professionals



Technical Data

Designed for basic electrical tests, the Fluke 101 digital multimeter offers reliable measurements for residential/commercial electricians and heating and air conditioning technicians. This small, lightweight multimeter fits comfortably in your hand but is rugged enough to withstand daily use for years to come. When it comes to professional-grade affordable multimeters, the Fluke 101 digital multimeter is your best choice.

Fluke 101 Product Highlights

- Basic dc accuracy 0.5 %
- CAT III 600 V safety rated
- Diode and continuity test with buzzer
- Small lightweight design for one-handed use
- Rugged, durable design
- Automatic shutdown
- Battery is easy to replace

Specifications

Electrical specifications

Function	Range	Resolution	Accuracy
AC volts (40 Hz to 500 Hz)	600.0 mV	0.1 mV	3.0% ± 3 digit
	6.000 V	0.001 V	1.0% ± 3 digit
	60.00 V	0.01 V	
	600.0 V	0.1 V	
DC volts	6.000 V	0.001 V	0.5% ± 3 digit
	60.00 V	0.01 V	
	600.0 V	0.1 V	
Resistance ohms	400.0 Ω	0.1 Ω	0.5% ± 3 digit
	4.000 kΩ	0.001 kΩ	0.5% ± 2 digit
	40.00 kΩ	0.01 kΩ	0.5% ± 2 digit
	400.0 kΩ	0.1 kΩ	0.5% ± 2 digit
	4.000 MΩ	0.001 MΩ	0.5% ± 2 digit
	40.00 MΩ	0.01 MΩ	1.5% ± 3 digit
Capacitance	50.00 nF	0.01 nF	NA
	500.0 nF	0.1 nF	
	5.000 μF	0.001 μF	
	50.00 μF	0.01 μF	
	100.0 μF	0.1 μF	
Frequency (10 Hz to 100 kHz)	50.00 Hz	0.01 Hz	NA
	500.0 Hz	0.1 Hz	
	5.000 kHz	0.001 kHz	
	50.00 kHz	0.01 kHz	
	100.0 kHz	0.1 kHz	
Duty cycle	0.1 % to 99.9 %	0.1 %	NA

General specifications

Continuity (audible)	Yes
CAT rating	CAT III 600 V
Auto shutoff	Yes
Size (HxWxL)	130 mm x 65 mm x 27mm
Weight	160 g
Battery	Two AAA
Warranty	1 year
IP rating	IP 40 per IEC 60529
Drop test	1 meter to surface
Temperature	Operating: 0 °C to 40 °C Storage: -30 °C to 60 °C

Ordering information

FLUKE-101 Digital Multimeter

Included equipment

- TL75 Test leads
- 2 AAA Batteries (installed)
- User's manual



Fluke. *The Most Trusted Tools in the World.*

Fluke Corporation
PO Box 9090, Everett, WA 98206 U.S.A.

Fluke Europe B.V.
PO Box 1186, 5602 BD
Eindhoven, The Netherlands

For more information call:
In the U.S.A. (800) 443-5853 or
Fax (425) 446-5116
In Europe/M-East/Africa +31 (0) 40 2675 200 or
Fax +31 (0) 40 2675 222
In Canada (800)-36-FLUKE or
Fax (905) 890-6866
From other countries +1 (425) 446-5500 or
Fax +1 (425) 446-5116
Web access: <http://www.fluke.com>

©2013 Fluke Corporation. Specifications subject to change without notice. Printed in U.S.A. 7/2013 6000031A_EN

Modification of this document is not permitted without written permission from Fluke Corporation.

FLUKE®

Fluke 106/107 Palm-sized Digital Multimeters

Fluke 106 and 107 put measurements in the palm of your hand

Technical Data

The Fluke 106 and 107 are compact, easy to use tools. These are palm-sized digital multimeters deliver safe, reliable measurements time after time.

The Fluke 106 and 107 are great products made to fit the way you work! These are the only Fluke digital multimeters designed to fit in the palm of your hand and go with you no matter where your job takes you.

Product highlights

- Voltage, resistance, continuity, capacitance
- Input terminal for ac and dc current measurements to 10 A and current
- Data hold
- Backlit display (107 only)
- Diode test, plus frequency and duty cycle measurements (107 only)



Specifications

Electrical specifications

Accuracy is specified for 1 year after calibration, at operating temperatures of 18 °C to 28 °C, relative humidity at 0 % to 75 %. Accuracy specifications take the form of:

$\pm([\% \text{ of Reading}] + [\text{Number of Least Significant Digits}])$

Function	Range	Resolution	Accuracy	
			106	107
AC volts (40 Hz to 500 Hz) ¹	6.000 V 60.00 V 600.0 V	0.001 V 0.01 V 0.1 V	1.0 % + 3	1.0 % + 3
DC volts	6.000 V 60.00 V 600.0 V	0.001 V 0.01 V 0.1 V	0.5 % + 3	0.5 % + 3
AC millivolts	600.0 mV	0.1 mV	3.0 % + 3	3.0 % + 3
Diode test ²	2.000 V	0.001 V	10 %	
Resistance (ohms)	400.0 Ω 4.000 kΩ 40.00 kΩ 400.0 kΩ 4.000 MΩ 40.00 MΩ	0.1 Ω 0.001 kΩ 0.01 kΩ 0.1 kΩ 0.001 MΩ 0.01 MΩ	0.5 % + 3 0.5 % + 2 0.5 % + 2 0.5 % + 2 0.5 % + 2 1.5 % + 3	0.5 % + 3 0.5 % + 2 0.5 % + 2 0.5 % + 2 0.5 % + 2 1.5 % + 3
Capacitance ³	50.00 nF 500.0 nF 5.000 μF 50.00 μF 500.0 μF 1000 μF	0.01 nF 0.1 nF 0.001 μF 0.01 μF 0.1 μF 1 μF	2 % + 5 2 % + 5 5 % + 5 5 % + 5 5 % + 5 5 % + 5	2 % + 5 2 % + 5 5 % + 5 5 % + 5 5 % + 5 5 % + 5
Frequency ⁴ (10 Hz to 100 kHz)	50.00 Hz 500.0 Hz 5.000 kHz 50.00 kHz 100.0 kHz	0.01 Hz 0.1 Hz 0.001 kHz 0.01 kHz 0.1 kHz	NA	0.1 % + 3
Duty cycle ⁵	0.1 % to 99.9 %	0.1 %	NA	1 % typical ¹
AC current (40 Hz to 200 Hz)	4.000 A 10.00 A	0.001 A 0.01 A	1.5 % + 3	1.5 % + 3
DC current	4.000 A 10.00 A	0.001 A 0.01 A	1.5 % + 3	1.5 % + 3
Backlight	—	—	No	Yes

¹ All AC, Hz, and duty cycle are specified from 1 % to 100 % of range.

Inputs below 1 % of range are not specified.

² Typically, open circuit test voltage is 2.0 V and short circuit current is < 0.6 mA.

³ Specifications do not include errors due to test lead capacitance and capacitance floor (may be up to 1.5 nF in the 50 nF range).

All AC, Hz, and duty cycle are specified from 1 % to 100 % of range. Inputs below 1 % of range are not specified. Typical means when the frequency is at 50 Hz or 60 Hz and the duty cycle is between 10 % and 90 %.

Function	Overload protection	Input impedance (nominal)	Common mode rejection ratio	Normal mode rejection ratio
AC volts	600 V ¹	> 10 MΩ < 100 pF ²	> 60 dB at dc, 50 Hz or 60 Hz	—
AC millivolts	600 mV	> 1M < 100 pF	> 80 dB at 50 Hz or 60 Hz	—
DC volts	600 V ¹	> 10 MΩ < 100 pF	> 100 dB at dc, 50 Hz or 60 Hz	> 45 dB at 50 Hz or 60 Hz

¹ 6 x 105 V Hz Max.

² For mV (AC), input impedance is approximately 1 MΩ.

General specifications

Maximum voltage between any terminal and earth ground	600 V
Display (LCD)	6000 counts, updates 3/sec
Battery type	2 AAA, NEDA 24A, IEC LR03
Battery life	200 hours minimum
Temperature	Operating: 0 °C to 40 °C Storage: -30 °C to 60 °C
Relative humidity	Operating Humidity: Non-condensing when < 10 °C ≤ 90 % at 10 °C to 30 °C; ≤ 75 % at 30 °C to 40 °C Operating Humidity, 40 MΩ Range: ≤ 80 % at 10 °C to 30 °C; ≤ 70 % at 30 °C to 40 °C
Altitude	Operating: 2000 m Storage: 12,000 m
Temperature coefficient	0.1 X (specified accuracy)/°C (< 18 °C or > 28 °C)
Fuse protection for current inputs	11 A, 1000 V Fast Fuse, Fluke specified part only
Size (HxWxL)	142 mm x 69 mm x 28mm
Weight	200 g
IP rating	IEC 60529: IP 40
Safety	IEC 61010-1: 600 V CAT III, Pollution Degree 2
Electromagnetic environment	IEC 61326-1: portable
Electromagnetic compatibility	Applies to use the Korea only. Class A Equipment (Industrial broadcasting and communication equipment) ¹
Warranty	One year

¹ This product meets requirements for industrial (Class A) electromagnetic wave equipment and seller or user should take notice of it. This equipment is intended for use in business environments and is not to be used in homes.

Ordering information

FLUKE-106 Digital Multimeter
FLUKE-107 Digital Multimeter

Included equipment

- TL75 Test leads
- 2 AAA Batteries (installed)
- User's manual

Fluke. The Most Trusted Tools in the World.



Authorised Retailer



FLUKE®

Fluke 115 Multimeter

Technical Data



Actual size



Compact true-rms meter for field service technicians

The Fluke 115 is the solution for a wide variety of electrical and electronic testing applications. This true-rms meter provides easy one-handed operation in a compact package.

Features include:

- Resistance, continuity, frequency, capacitance, and diode test
- Measures 10 A (20 A overload for 30 seconds)
- Large white LED backlight to work in poorly lit areas
- Compact ergonomic design for one-handed operation
- Compatible with optional magnetic hanger (ToolPak™)
- True-rms for accurate measurements on non-linear loads
- Min/Max/Average with elapsed time to record signal fluctuations
- CAT III 600 V safety rated

General specifications

Accuracy is specified for 1 year after calibration, at operating temperatures of 18 °C to 28 °C, with relative humidity at 0 % to 90 %.

The accuracy specifications take the form of:
 $\pm ([\% \text{ of reading}] + [\text{counts}])$

Maximum voltage between any terminal and earth ground	600 V
Surge protection	6 kV peak per IEC 61010-1 600 V CAT III, Pollution Degree 2
Fuse for A input	11 A, 1000 V FAST Fuse (Fluke PN 803293)
Display	Digital: 6,000 counts, updates 4/sec
Bar graph	33 segments, updates 32/sec
Operating temperature	-10 °C to + 50 °C
Storage temperature	-40 °C to + 60 °C
Battery	9 volt Alkaline, NEDA 1604A/ IEC 6LR61
Battery life	400 hours typical, without backlight

Accuracy specifications

Measurement	Range	Resolution	Accuracy ± ([% of reading] + [counts])
DC millivolts	600.0 mV	0.1 mV	0.5 % + 2
DC volts	6.000 V	0.001 V	0.5 % + 2
	60.00 V	0.01 V	
	600.0 V	0.1 V	
Auto volts	600.0 V	0.1 V	2.0 % + 3 (dc, 45 Hz to 500 Hz) 4.0 % + 3 (500 Hz to 1 kHz)
AC millivolts ¹ true-rms	600.0 mV	0.1 mV	1.0 % + 3 (dc, 45 Hz to 500 Hz) 2.0 % + 3 (500 Hz to 1 kHz)
AC volts ¹ true-rms	6.000 V	0.001 V	1.0 % + 3 (45 Hz to 500 Hz) 2.0 % + 3 (500 Hz to 1 kHz)
	60.00 V	0.01 V	
	600.0 V	0.1 V	
Continuity	600 Ω	1 Ω	Beeper on < 20 off > 250 ; detects opens or shorts of 500 μs or longer.
Ohms	600.0 Ω	0.1 Ω	0.9 % + 2
	6.000 kΩ	0.001 kΩ	
	60.00 kΩ	0.01 kΩ	
	600.0 kΩ	0.1 kΩ	
	6.000 MΩ	0.001 MΩ	
	40.00 MΩ	0.01 MΩ	
Diode test	2.000 V	0.001 V	0.9 % + 2
Capacitance	1000 nF	1 nF	1.9 % + 2
	10.00 μF	0.01 μF	
	100.0 μF	0.1 μF	
	9999 μF	1 μF	
	100 μF to 1000 μF		1.9 % + 2
	> 1000 μF		5 % + 20
Lo-Z capacitance	1 nF to 500 μF		10 % + 2 typical
AC amps true-rms (45 Hz to 500 Hz)	6.000 A	0.001 A	1.5 % + 3
	10.00 A	0.01 A	
	20 A overload for 30 seconds max.		
DC amps	6.000 A	0.001 A	1.0 % + 3
	10.00 A	0.01 A	
	20 A overload for 30 seconds max.		
Hz (V or A input) ²	99.99 Hz	0.01 Hz	0.1 % + 2
	999.9 Hz	0.1 Hz	
	9.999 kHz	0.001 kHz	
	50.00 kHz	0.01 kHz	

Notes:

¹ All ac voltage ranges are specified from 1 % to 100 % of range. Because inputs below 1 % of range are not specified, it is normal for this and other true-rms meters to display non-zero readings when the test leads are disconnected from a circuit or are shorted together. For volts, crest factor of ≤ 3 at 4000 counts, decreasing linearly to 1.5 at full scale. AC volts is ac coupled and ac mV is dc coupled.

² Frequency is ac coupled, 5 Hz to 50 kHz for ac voltage. Frequency is dc coupled, 45 Hz to 5 kHz for ac current.

Ordering information

Fluke-115 Multimeter

Included

TL75 Test leads, holster, User's manual and 9 V battery (installed).



Fluke. *Keeping your world up and running.™*

Fluke Corporation

PO Box 9090, Everett, WA USA 98206

Fluke Europe B.V.

PO Box 1186, 5602 BD Eindhoven, The Netherlands

For more information call:

In the U.S.A. (800) 443-5853 or Fax (425) 446-5116
In Europe/M-East/Africa (31 40) 2 675 200 or Fax (31 40) 2 675 222
In Canada (800)-36-FLUKE or Fax (905) 890-6866
From other countries +1 (425) 446-5500 or Fax +1 (425) 446-5116
Web access: <http://www.fluke.com>

©2006-2009 Fluke Corporation.
Specifications subject to change without notice.
Printed in U.S.A. 2/2009 2634043 D-EN-N Rev C

Modification of this document is not permitted without written permission from Fluke Corporation.

Fluke 179 Digital Multimeter

For maintenance and field service



The Fluke 179 True-rms Multimeter has the features needed to find most electrical and HVAC problems. Simple to use with significant improvements over the original Fluke 70 Series.

- Wide 1000 V measurement range
- True-rms for precise measurement of non-linear signals
- Capacitance, resistance, continuity and frequency
- Built-in thermometer (Fluke 179 only)
- Large, easy-to-read display
- Backlight for work in dimly lit areas (Fluke 177 and 179 only)
- Min/Max/Avg to record signal fluctuations
- Display hold and auto hold
- Manual and automatic ranging

Electrical safety

All inputs are protected to measurement CAT III 1000 V and CAT IV 600 V. This meter can withstand transient impulses in excess of 8000 V to help protect you from arc blasts resulting from surges and spikes.

Also available the **175** and **177** multimeters, see below for specifications.



Features

Features	179	177	175
Max voltage	1000	1000	1000
True-rms	•	•	•
Temperature	•	—	—
Basic dc accuracy	0.09 %	0.09 %	0.15 %
Backlight	•	•	—
Min/Max/Avg	•	•	•
ToolPak meter hanging kit with magnet	Opt	Opt	Opt
Limited lifetime warranty	•	•	•

Specifications

Functions	Range and resolution	Best accuracy
DC voltage	600.0 mV, 6.000 V, 60.00 V, 600.0 V, 1000 V	± 0.09 % (Models 177 and 179) ± 0.15 % (Model 175)
AC voltage ¹	600.0 mV, 6.000 V, 60.00 V, 600.0 V, 1000 V	± 1.0 % of reading
DC current	60.00 mA, 400.0 mA, 6.000 A, 10.00 A ²	± 1.0 % of reading
AC current ²	60.00 mA, 400.0 mA, 6.000 A, 10.00 A ²	± 1.5 % of reading
Resistance	600.0 Ω, 6.000 kΩ, 60.00 kΩ, 600.0 kΩ, 6.000 MΩ, 50.00 MΩ	± 0.9 % of reading
Capacitance	1000 nF, 10.00 μF, 100.0 μF, 9999 μF	± 1.2 % of reading
Frequency ³	99.99 Hz, 999.9 Hz, 9.999 kHz, 99.99 kHz	± 0.1 % of reading
Temperature (Model 179)	-40 °C to +400 °C (-40 °F to +752 °F)	1.0 % of reading

¹All ac voltage and ac current ranges are specified from 5 % of range to 100 % of range.

²10 A continuous, 20 A for up to 30 seconds.

³Voltage frequency is specified from 2 Hz to 100 kHz. Current frequency is specified from 2 Hz to 30 kHz.

Battery life: 200 hours typical for alkaline.

Size (HxWxL): 4.3 cm x 9.0 cm x 18.5 cm (1.7 in x 3.5 in x 7.3 in).

Ordering information

Included accessories	Models
Test leads, 9 V battery (installed) and manual. The Fluke 179 comes with an additional temperature probe.	FLUKE-179 Digital Multimeter
	FLUKE-175 Digital Multimeter
	FLUKE-177 Digital Multimeter
	FLUKE-179/1AC-II Electricians Combo Kit
	FLUKE-179/EDA2 Electronics Combo Kit

Recommended accessories



TPAK
Magnetic
Meter Hanger
See page 64



TL81A
Deluxe Electronic
Test Lead Set
See page 57



TL175
TwistGuard™ Test Leads
See page 59



i410
AC/DC Current Clamp
See page 62



CKT170
Extreme Hard Case
See page 56



C25
Meter Case
See page 56

Recommended kits



179/EDA2 Electronics Multimeter and Deluxe Accessory Combo Kit

- True-rms digital multimeter
- Electronic test probes
- SureGrip™ silicone test leads
- SureGrip™ heavy duty hook clips
- Type K temperature probe
- Meter hanging accessory
- Soft case



179/1AC-II Electrician's Multimeter and Voltage Tester Combo Kit

- True-rms digital multimeter
- Non-contact voltage detector
- Alligator clips
- SureGrip™ test probes
- Silicone test leads, 1.5 m
- Type K temperature probe
- Meter hanging accessory
- Soft case

Check price and availability at
www.fluke.com/wtb

New Fluke 305, 303 and 302+ Clamp Meters

Introducing the new compact AC Clamp Meters from Fluke

Package Contents

- Carrying case
- User's manual
- Test Leads (TL 75)
- Registration Card
- Calibration certificate
- 2 x AA Batteries



The new Fluke 305, 303 and 302+ come with all the rugged, reliable and accurate features your customers have come to trust in a small, ergonomic design. The new body design is different from the traditional Fluke clamp meters and offers a more compact design to meet the needs of your customers.

Your customers know and use the Fluke family of products every day and they understand how crucial having a rugged, reliable and accurate tool with them on the job can be. With features like 999.9 A AC Current (305), 400 A AC (302+), 600 A AC (303), large 30 mm jaw opening and a CAT IV 300V/CAT III 600V safety rating, all of the necessary features for your value conscious clamp customers are met in a small, easy to use product.

PRICE

Clamp Meters		
Fluke 302	Clamp Meter 400A AC True RMS	R 1 191
	Quantity discounts:	
	1 to 5 units	R 1 191
	6 to 10 units	R 1 072
	11 plus units	R 954
Fluke 303	Clamp Meter 600A AC True RMS	R 1 492
	Quantity discounts:	
	1 to 5 units	R 1 492
	6 to 10 units	R 1 343
	11 plus units	R 1 195
Fluke 305	Clamp Meter 1000A AC True RMS	R 1 766
	Quantity discounts:	
	1 to 5 units	R 1 766
	6 to 10 units	R 1 589
	11 plus units	R 1 414

Clamps are also used broadly in a wide variety of other applications including:

- The SIM segment electrician working in:
- Industrial Plants
- Process Industries
- Facilities and Commercial Building Maintenance
- Service Organizations

These electricians often work as:

- Electrical Contractors
- Customer Service Engineers
- Utility Meter Technicians
- Engineers

Why do they buy Fluke Clamp Meters?

Fluke tools are known for their ruggedness and on-the-job reliability. The 30x clamps are the most rugged clamp meters available in an affordable package. With simple one-knob operation, large easy-to-read display and a two-year warranty, Fluke offers a product that makes your customers the go-to person on the job site.

Specifications of the new 303 and 302+ Clamp Meters

Technical Specifications				
Model		302+	303	305
AC current	Range	400.0A	600.0A	999.9
	Accuracy	1.8% ±5	1.8% ±5	2% ±5
AC voltage	Range	400/600	400/600	400/600
	Accuracy	1.5% ±5	1.5% ±5	1.5% ±5
DC voltage	Range	400/600	400/600	400/600
	Accuracy	1.0% ±5	1.0% ±5	1.5% ±5
DC mV range		<input type="checkbox"/>	<input type="checkbox"/>	
Resistance	Range	4000 Ω	4000 Ω	4000 Ω
	Accuracy	1% ±5	1% ±5	1% ±5
Continuity		≤70 Ω	≤70 Ω	≤70 Ω
Backlight display		Yes	Yes	Yes
Data Hold		Yes	Yes	Yes
Size	H x W x D (mm)	208 x 58.5 x 28	208 x 58.5 x 28	208 x 58.5 x 28
	Jaw size	30 mm	30 mm	30 mm
Safety rating		CAT III 600V	CAT III 600V	CAT III 600V
Temperature		0 ~ 40 °C	0 ~ 40 °C	0 ~ 40 °C
Screen refresh rate		> 2 times / sec.	> 2 times / sec.	
Test leads		TL75	TL75	TL75
Battery		2 AA batteries	2 AA batteries	2 AA batteries
Warranty		2 years	2 years	2 years

FLUKE®

Fluke 317/319

True RMS Clamp Meters

Accurate. Rugged. Safe.

New



Fluke 317/319

True RMS Clamp Meters

FLUKE®



General specifications	
Power supply	3x AAA IEC LR03 batteries
Max. jaw opening	37 mm (1.45 in)
Jaw diameter	37 mm (1.45 in)
Dimensions (L x W x H)	234 mm x 74 mm x 34.8 mm
Weight	384 g (13.5 oz) (with battery)
Calibration	Fully manual calibration and testing, one year calibration testing period
Digital display resolution	6000 digits
Safety	CE EN/IEC 61010-1 and IEC 61010-2-032 Measurement category: 600 V CAT III (Category III)

Environmental indicators	
Working temperature	-10°C to 50°C (14°F to 122°F)
Storage temperature	-40°C to 60°C (-40°F to 140°F)
IP equivalent	IP40
Drop test requirements	Drop height tested to 1 m (3 ft), all six sides tested, oak flooring

Fluke 317, 319 functions: new/improved features

- Thin jaws and small, light body mean the meters are more suitable for use in confined spaces.
- Large 1000 A AC/DC current measurement with AC/DC voltage measurement.
- Inrush measurement technology allows measurement of starting current for devices such as motors and lightning equipment; integration time is 100 ms (Fluke 319 only).
- Frequency measurements enable accurate measurement of PWM output signal frequency (Fluke 319 only).
- True RMS AC/DC measurement
- Min/max function suitable for current and voltage
- Large easy to read, 6000 count backlit display
- 4000 Ω resistance measuring span
- Data hold function can save measurement results on the screen
- Continuity beeper $\leq 30 \Omega$
- Auto Power Off function maximises battery life span
- Clamp opening: 37 mm (1.45 inch)
- Warranty - 1 year



Fluke 317/319

True RMS Clamp Meters

FLUKE®

Technical specifications			
Function	Parameter	Fluke 317	Fluke 319
AC Current	Measurement	40.00 A	40.00 A
		600.0 A	600.0 A
			1000 A
	Resolution	0.01 A	0.01 A
		0.1 A	0.1 A
			1 A
	Precision	Accuracy 1.6% ± 6 digits (50-60 Hz) [40 A]	1.6% ± 6 digits (50-60 Hz) [40 A]
		2.5% ± 8 digits (60-500 Hz) [40 A]	2.5% ± 8 digits (60-500 Hz) [40 A]
		1.5% ± 5 digits (50-60 Hz) [600 A]	1.5% ± 5 digits (50-60 Hz) [600/1000 A]
		2.5 % ± 5 digits (60-500 Hz) [600 A]	2.5% ± 5 digits (60-500 Hz) [600/1000 A]
When crest factor CF > 2, increase the specifications by 2%	For 500 A, maximum 3.0	For 500 A, maximum 3.0	
	For 600 A, maximum 2.5	For 600 A, maximum 2.5	
	AC response	RMS	RMS
DC Current	Range	40.00 A	40.00 A
		600.0 A	600.0 A
			1000 A
	Resolution	0.01 A	0.01 A
		0.1 A	0.1 A
			1 A
	Accuracy	1.6% ± 6 digits [40 A]	1.6% ± 6 digits [40 A]
1.5% ± 5 digits [600 A]			
AC voltage	Range	600.0 V	
	Resolution	0.1V	
	Accuracy	1.5% ± 5 digits (20-500Hz)	
	AC response	RMS	
DC voltage	Range	600.0 V	
	Resolution	0.1 V	
	Accuracy	1% ± 4 digits	
Resistance	Measurement	4000 Ω	
	Resolution	0.1 Ω	
		1.0 Ω	
	Accuracy	1% ± 5 digits	
Continuity		≤ 30 Ω	
Inrush current	Integration time	NA	100 ms
Frequency	Measuring span	NA	5.0-500.0 Hz
	Accuracy	NA	0.5% ± 5 digits
	Power level	NA	10 - 100 Hz ≥ 5 A, 5 - 10 Hz, 100 - 500 Hz ≥ 10 A



Fluke 317/319 True RMS Clamp Meters

- Frequency measurement (Fluke 319)
- Unique 40 A low frequency measurements capability with 0.01 A resolution, 1.6 % accuracy

Fluke 317/319 True RMS Clamp Meters

FLUKE®

Also available

DIGITAL MULTI METERS

FLUKE 15B / 17B



FLUKE 115



FLUKE 179 with TPAK



CLAMP METERS

FLUKE 322



FLUKE 374



FLUKE iFlex™



ADDITIONAL RANGE

FLUKE TL 175



LVD 2



FLUKE 62



Look out for this
sticker on every
Fluke test
tool Packaging



Look out for this
hologram sticker
on every Fluke
test tool



Look for Genuine Warranty Sticker

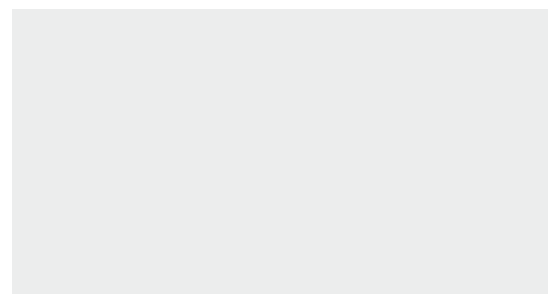
Fluke. *Keeping your world
up and running.®*

FLUKE®

10th Floor, Sigma, Hiranandani Business Park,
Powai, Mumbai - 400076.INDIA.
Tel : 1 800 209 9110 (Toll-Free)
Fax : +91 22 4227 0338
E-mail : info.india@fluke.com
Web : www.fluke.com/india



Your nearest representative



Fluke 362

200A AC / DC Clamp Meter

Ready to go wherever your work takes you.

Technical Data

The new Fluke 362 Clamp Meter is designed to fit easily in your pocket. The small 18 mm triangular jaw allows access into tight places where other clamp meters can't reach, while providing the accuracy you can trust from a Fluke tool. This durable clamp meter is a must-have for basic clamp measurements.

Features & Benefit

- CAT III 600 V safety rating
- 200 A AC / DC current and 600 V AC / DC voltage
- 3000 Ω resistance range
- Continuity detection
- Zero function allows the display to be cleared for DC measurements
- Data hold function
- Large, easy-to-read display for easy viewing
- 18 mm triangular jaw allows for easy measurement in tight space
- Thin, light, compact body design for one-hand operation
- 2 years warranty
- Fluke India Calibration Certificate included



Technical specifications

	Range	Resolution	Accuracy
AC current	200 A	0.1 A	2 % ± 5 digits (45–65 Hz) 2.5 % ± 5 digits (65–400 Hz)
DC current	200 A	0.1 A	2 % ± 5 digits
AC voltage	600 V	0.1 V	1.5 % ± 5 digits (45–400 Hz)
DC voltage	600 V	0.1 V	1 % ± 5 digits
Resistance	300/3000Ω	0.1/1Ω	1 % ± 5 digits
Continuity	≤ 70 Ω		
Data hold	Yes		

General specifications

Size (LxWxH)	205 mm × 60 mm × 22 mm
Jaw opening	18 mm
Weight	196 g
Safety rating	CAT III 600 V
Warranty	2 years

Typical Applications

- UPS / Inverter troubleshooting
- Battery charger trouble shooting
- Battery bank maintenance
- Residential / Commercial buildings
- Industrial troubleshooting
- General electrical / electronics maintenance



Ordering information

Fluke 362 Clamp Meter

Included:

Clamp meter, TL75 test lead set, two AAA batteries (installed) and user manual.

Authorised Retailer

Fluke .The Most Trusted Tools In The World.



SGM Lab Solutions

Regd. Office: BA-15, Mangolpuri Industrial Area Phase-II Delhi-110034 +91-11-48481414, +91-8130897474
 Branch Office: No.26, "Shri" Complex, 2nd Floor, Bendre Nagar, Above "SBM" ATM, Subramanya Pura Main Road ,
 Kadirenahalli, Bangalore-560070 +91-80-42287106, +91-9902011444
 Fax: +91-11-4385 2040 Email: info@lab360.co.in

Fluke 374 Clamp Meter



Perfect for many current measurement situations

The new Fluke 374 clamp meters offer improved performance perfect for many current measurement situations. With true-rms ac voltage and current measurements, the Fluke 374 can read up to 600 V and 600 A in both ac and dc modes. Additionally, both are compatible with the new iFlex™ flexible current probe (sold separately) which expands the measurement range to 2500 A ac and provides increased display flexibility, ability to measure around awkward sized conductors and improved wire access.



Specifications

Jaw Opening	1.33" (34mm)
Max Wire Size	750 MCM
Current Range AC (RMS)	0 - 600 A
Accuracy AC Current (50/60Hz)	2% +/- 5 counts
AC Response	True-rms
Current Range DC	0 - 600 A
Accuracy DC current	2% +/- 5 counts
Voltage Range AC	0 - 600 V
Accuracy AC Voltage	1.5% +/- 5 counts
Voltage Range DC	0 - 600 V
Accuracy DC Voltage	1% +/- 5 counts
Resistance Range	0 - 6000 Ω
Mechanical, Environmental and Safety Ratings (Category Ratings)	600 V CAT IV 1000 V CAT III

iFlex™ i2500-18



Additional accessory for Fluke 374
2500 Amp AC current measurement with
iFlex™ flexible current probe (sold separately)

TECHNICAL DATA

Fluke TiS20+/TiS20+ MAX Thermal Imagers



FLUKE CONNECT™ ASSET TAGGING

Eliminate hours at the computer organizing your thermal images, let Asset Tagging do all that work for you. No more dragging and dropping or renaming files in the office, just scan a QR code on your asset, capture your thermal images and they automatically are sorted by asset. Start spending your time analyzing your images and creating reports instead of sorting your files one at a time.

Save time with the right level of infrared and analysis

- Continuous touchscreen IR-Fusion™, slide your finger across the screen to adjust the setting.
- 120 x 90 infrared resolution (10,800 pixels)
- 3.5" LCD touchscreen display for easy troubleshooting
- Automatically sort images with Fluke Connect Asset Tagging

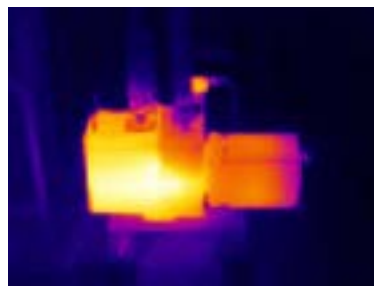
Rugged

Whether you are finding an uneven load on a switchgear or inspecting a ventilation system, the Fluke TiS20+ and TiS20+ MAX helps you detect issues quickly.

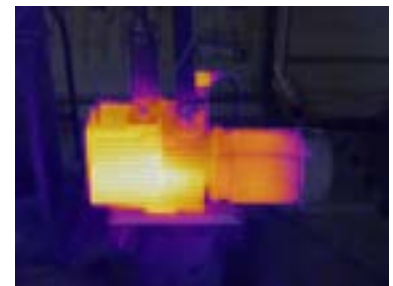
- Can withstand drop up to 2 meter
- Water and dust resistant—IP54 enclosure rating

IR-Fusion™

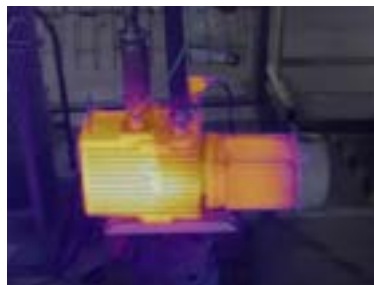
Fluke IR-Fusion technology combines visible and infrared images for faster inspections and better reporting. With a single touch, you can scan from full infrared to full visible images to pinpoint the location of an issue.



Full infrared image*



75 % blended image*



50 % blended image*



Full visible image

*Simulated thermal images

Specifications

Key features	TiS20+/TiS20+ MAX
Infrared resolution	120 x 90 (10,800 pixels)
IFOV (spatial resolution)	7.6 mRad, D:S 130:1
Field of view	50° H x 38° V
Minimum focus distance	50cm (20 inches)
Focus system	Fixed focus
Data transfer	Mini USB used to transfer image to PC
Wireless connectivity	Yes, (802.11 b/g/n (2.4 GHz))
Fluke Connect instant upload	Yes, connect your camera to your building's WiFi network (802.11 b/g/n (2.4 GHz)), and images taken automatically upload to the Fluke Connect system or your local server for storage and viewing on your PC
Image quality	
Level and span	Smooth auto and manual scaling
IR-Fusion technology	AutoBlend continuous 0 % to 100 %. Adds the context of the visible details to your infrared image
Display	3.5" LCD touchscreen (landscape)
Display resolution	320 x 240 LCD
Thermal sensitivity (NETD)	60 mK
Frame rate	9 Hz
Data storage and image capture	
Memory	Internal 4GB memory (includes slot for optional micro SD card up to 32GB)
Image capture, review, save mechanism	One-handed image capture, review, and save capability
Image file formats	Non-radiometric (jpeg), or fully radiometric (.is2); no analysis software required for non-radiometric (jpeg) files
Software	Fluke Connect desktop software—full analysis and reporting software with access to the Fluke Connect system
Export file formats with software	.bmp, .dib, .jpg, .tif, .tiff
Battery	
Batteries (field-replaceable, rechargeable)	Lithium ion smart battery pack with five-segment LED display to show charge level
Battery life	≥ 5 hours continuous (without WiFi)
Battery charging time	2.5 hours to full charge
Battery charging system	In-imager charging. Optional 12 V automotive charging adapter
AC operation	AC operation with included power supply (100 V AC to 240 V AC, 50/60 Hz)
Power saving	Automatic Shutdown: 5, 10, 15 and 20 minutes or never
Temperature measurement	
Temperature measurement range (not calibrated below 0 °C)	TiS20+: -20 °C to 150 °C (-4 °F to 302 °F) TiS20+ MAX: -20 °C to 400°C (-4°F to 752 °F)
Accuracy	Target temp at or over 0 °C: Accuracy: ± 2 °C or ± 2 % at 25 °C, whichever is the greater.
On-screen emissivity correction	Yes, material table
On-screen reflected background temperature compensation	Yes
Center-point temperature	Yes
Spot temperature	Hot and cold spot markers

Specifications *continued*

Key features	TiS20+/TiS20+ MAX
Color palettes	
Standard palettes	6: Ironbow, Blue-Red, High Contrast, Amber, Hot Metal, Grayscale
General specifications	
Infrared spectral band	8 µm to 14 µm (long wave)
Operating temperature	-10 °C to 50 °C (14 °F to 122 °F)
Storage temperature	-40 °C to 70 °C (-40 °F to 158 °F)
Relative humidity	95 % non-condensing
Safety	IEC 61010-1: Pollution Degree 2
Electromagnetic compatibility	EN 61326-1, CISPR 11: Group 1, Class A
US FCC	CFR, Part 15C
Vibration and shock	10 Hz to 150 Hz, 0.15 mm, IEC 60068-2-6; 30 g, 11 ms, IEC 60068-2-27
Drop	Engineered to withstand 2 meter drop
Size (H x W x L)	26.7 cm x 10.1 cm x 14.5 cm (10.5 in x 4.0 in x 5.7 in)
Weight	0.72 kg (1.6 lb)
Enclosure rating	IP54 (protected against dust, limited ingress; protection against water spray from all directions)
Warranty	Two-years (standard)
Supported languages	Czech, Dutch, English, Finnish, French, German, Hungarian, Italian, Japanese, Korean, Polish, Portuguese, Russian, Simplified Chinese, Spanish, Swedish, Traditional Chinese, and Turkish

Ordering information

FLK-TiS20+ 9HZ 120 x 90 Thermal Imager; 9 HZ
FLK-TiS20+ 9HZ/CN 120 x 90 Thermal Imager; 9 HZ; China
FLK-TiS20+ MAX 9HZ 120 x 90 Thermal Imager; 9 HZ
FLK-TiS20+ MAX 9HZ/CN 120 x 90 Thermal Imager; 9 HZ; China

Included

Infrared camera; AC power supply (including universal AC adapters); rugged lithium ion smart battery, USB cable; soft transport bag. Available by free download: Fluke Connect Desktop software and user manual.

Optional accessories

FLK-TIS-MSD Mini SD card
FLUKE-TIX5XX HAND Handstrap
FLK-TI-SBP3 Additional Smart Battery
FLK-TI-SBC3B Smart Battery Charger
TI-CAR CHARGER Car Charger

Visit your local Fluke website or contact your local Fluke representative for more information.



Share images from the field. Collaborate and report immediately.

Get the most out of your TiS20+ and TiS20+ MAX. Download Fluke Connect today.

Save time by sending your images to the team while working in the field.

The Fluke Infrared Cameras are part of a growing system of connected test tools and equipment maintenance software.

